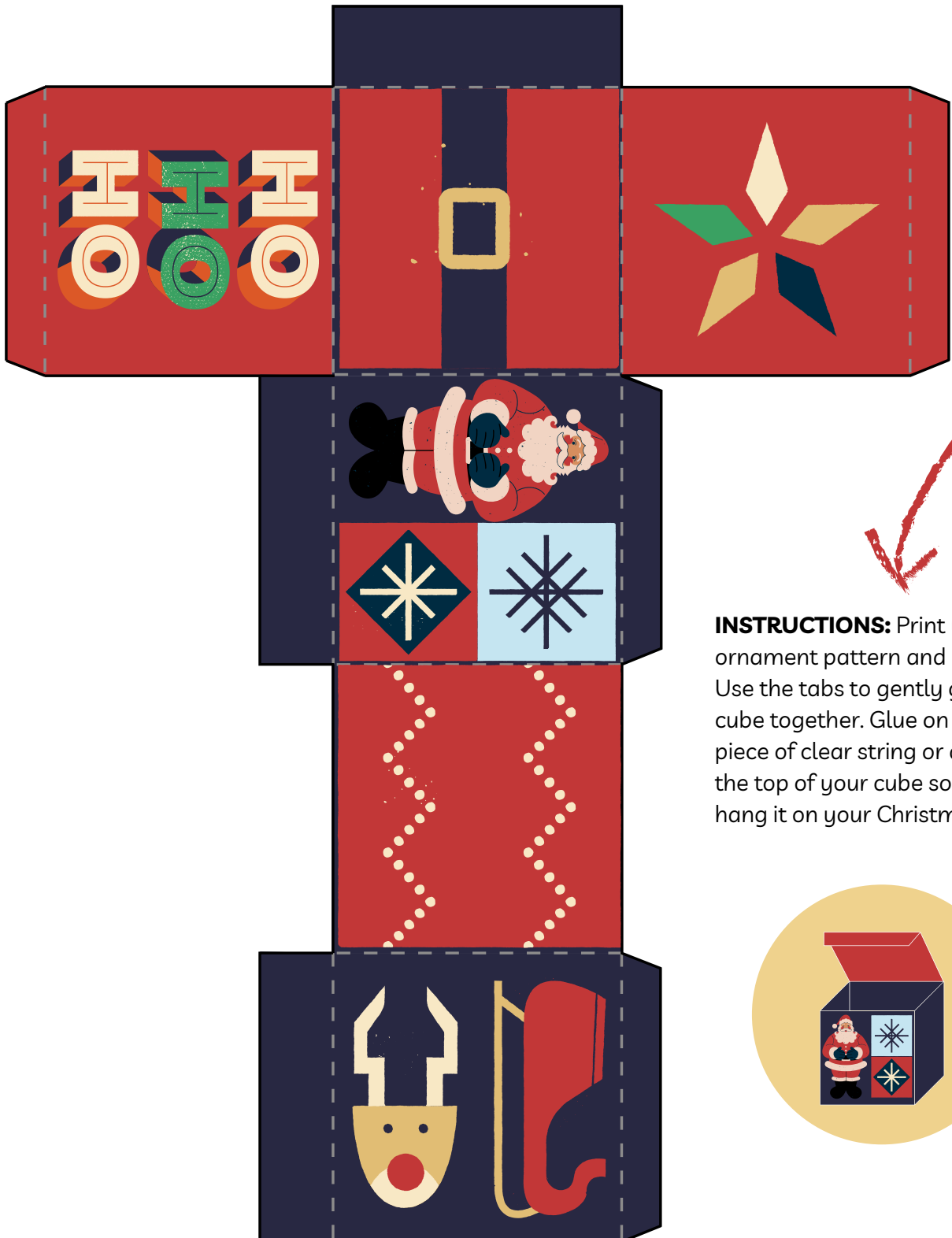




# CHRISTMAS Cube Ornament

(Makes a 2" cube ornament.)



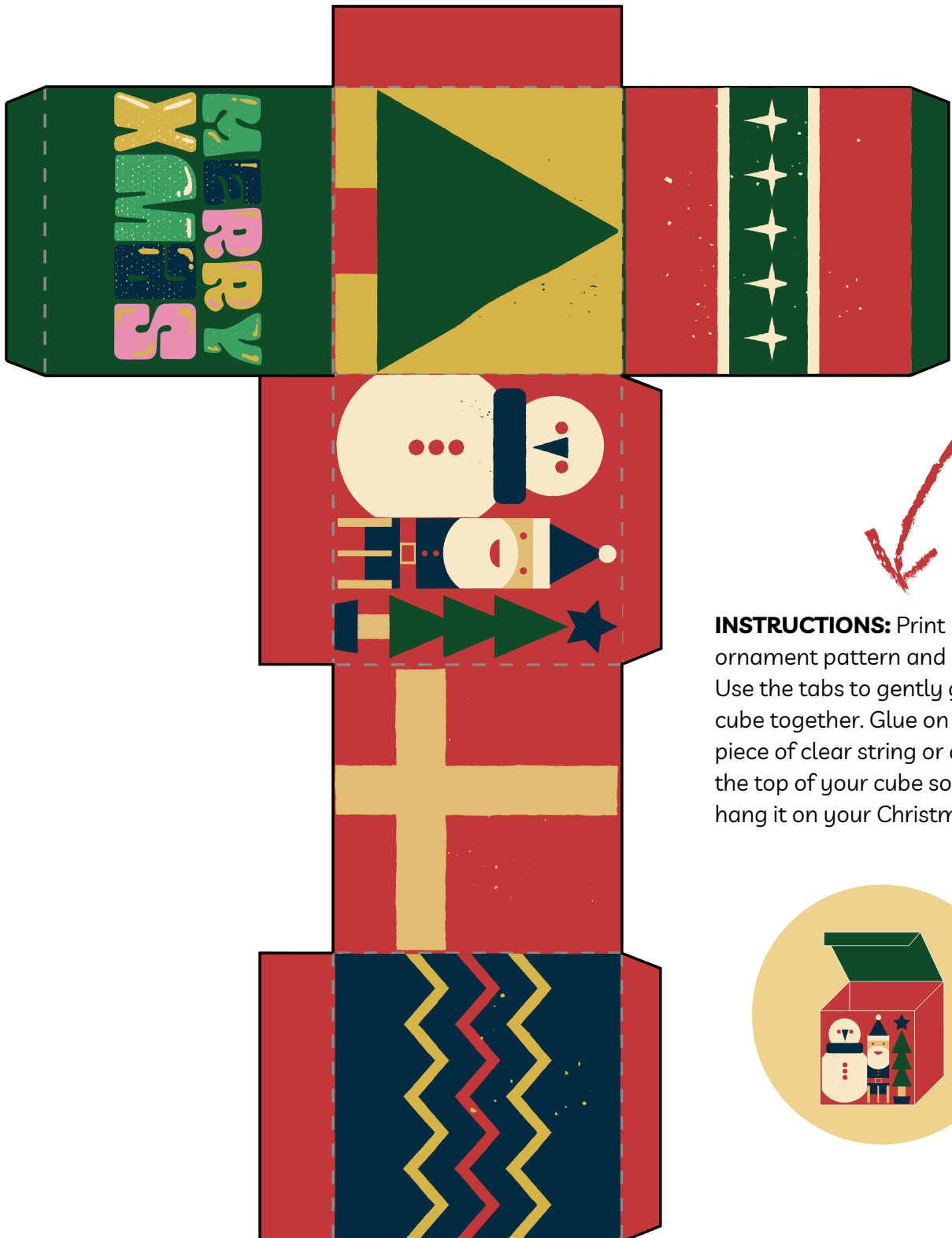
**INSTRUCTIONS:** Print your ornament pattern and cut it out. Use the tabs to gently glue your cube together. Glue on a looped piece of clear string or a ribbon on the top of your cube so you can hang it on your Christmas tree!





# CHRISTMAS Cube Ornament

(Makes a 2" cube ornament.)



**INSTRUCTIONS:** Print your ornament pattern and cut it out. Use the tabs to gently glue your cube together. Glue on a looped piece of clear string or a ribbon on the top of your cube so you can hang it on your Christmas tree!





# CHRISTMAS Cube Ornament

(Makes a 2" cube ornament.)



**INSTRUCTIONS:** Print your ornament pattern and cut it out. Use the tabs to gently glue your cube together. Glue on a looped piece of clear string or a ribbon on the top of your cube so you can hang it on your Christmas tree!

